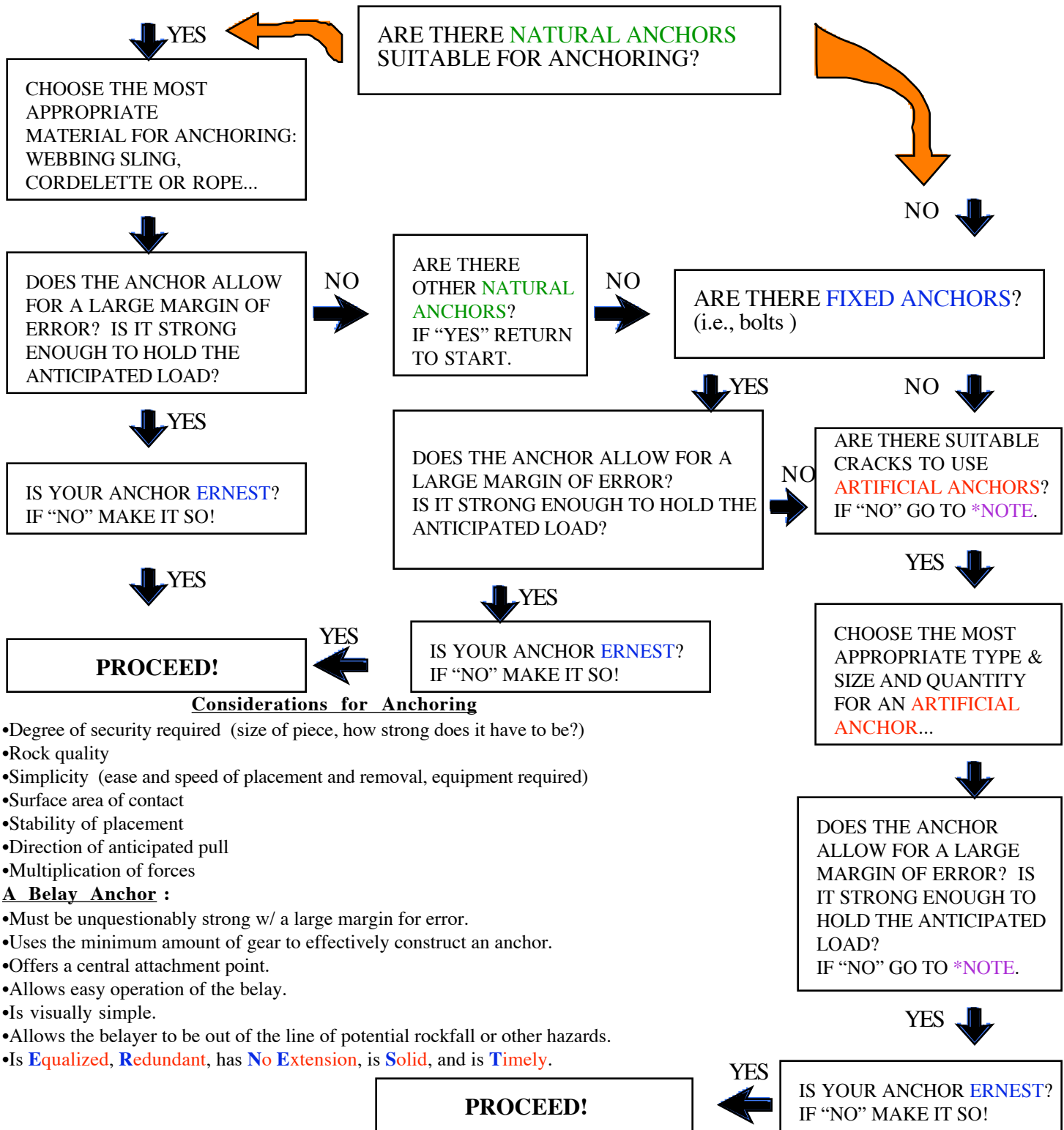


anchoring flow chart - start



Considerations for Anchoring

- Degree of security required (size of piece, how strong does it have to be?)
- Rock quality
- Simplicity (ease and speed of placement and removal, equipment required)
- Surface area of contact
- Stability of placement
- Direction of anticipated pull
- Multiplication of forces

A Belay Anchor :

- Must be unquestionably strong w/ a large margin for error.
- Uses the minimum amount of gear to effectively construct an anchor.
- Offers a central attachment point.
- Allows easy operation of the belay.
- Is visually simple.
- Allows the belayer to be out of the line of potential rockfall or other hazards.
- Is **Equalized**, **Redundant**, has **No Extension**, is **Solid**, and is **Timely**.

PROCEED!

***NOTE**
TOPROPING?: GO SOMEWHERE ELSE!
LEADING?: CLIMB TO A POSITION W/ BETTER ANCHOR POSSIBILITIES! THEN, RETURN TO THE START...